

Westmount Estates



Earlshall Road, Eltham, SE9 1PR

£2,950 Per Month

This exquisite three-bedroom 'Corbett' family home is nestled in the heart of Eltham Park, offering proximity to schools, a mainline station and the bustling High Street. Inside, the current owners have tastefully decorated, blending modern amenities with original charm. Highlights include a modern fitted kitchen and bathroom, complemented by ornate coved cornices, elegant ceiling roses, and original cast iron fireplace.

The ground floor boasts a delightful pitched roof conservatory seamlessly integrated with the second reception room, creating a harmonious living space. In addition, the property features a convenient utility and a garden office providing a tranquil workspace.

Outside, a well-maintained south facing garden awaits at the rear, providing a serene retreat. Additionally, the property features a driveway at the front, ensuring convenient off-road parking.

ENTRANCE



KITCHEN



ENTRANCE HALL



CONSERVATORY

UTILITY ROOM

DOWNSTAIRS BATHROOM/TOILET

LANDING

BEDROOM ONE



LOUNGE



BEDROOM TWO



DINING ROOM



BEDROOM THREE



FAMILY BATHROOM



REAR GARDEN

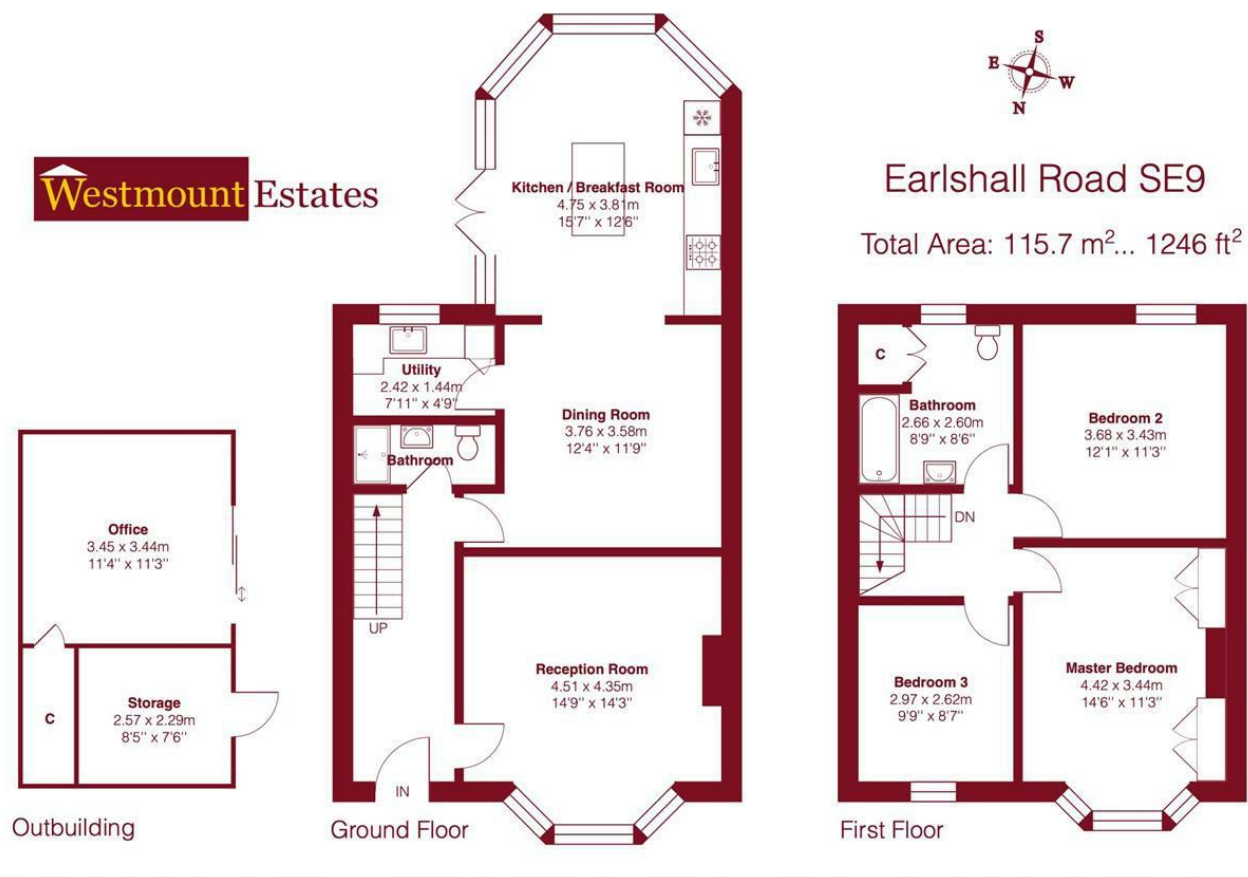


DRIVEWAY/FRONT GARDEN

OFFICE

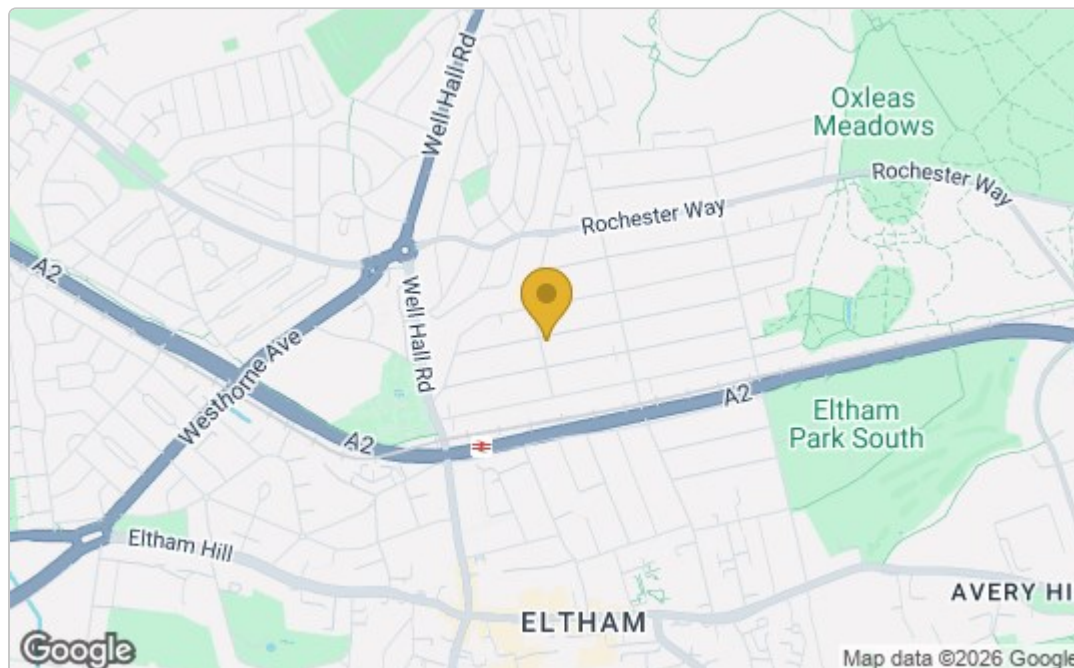


Floor Plan

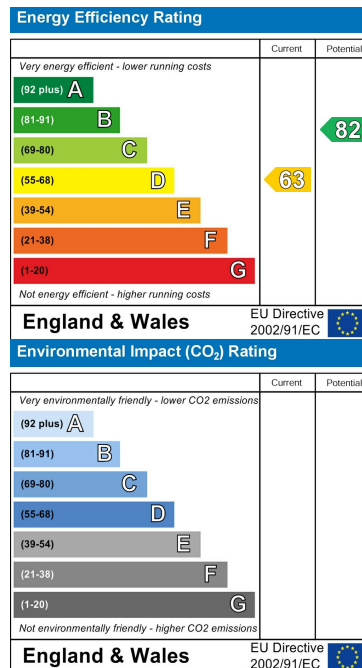


This plan is for layout guidance only and not drawn to scale unless stated. Window and door openings are approximate. Whilst every care is taken in the preparation of this plan, we would advise interested parties to check all dimensions, shapes and compass bearings prior to making any decisions reliant upon them.

Area Map



Energy Efficiency Graph



These particulars, whilst believed to be accurate are set out as a general outline only for guidance and do not constitute any part of an offer or contract. Intending purchasers should not rely on them as statements of representation of fact, but must satisfy themselves by inspection or otherwise as to their accuracy. No person in this firm's employment has the authority to make or give any representation or warranty in respect of the property.